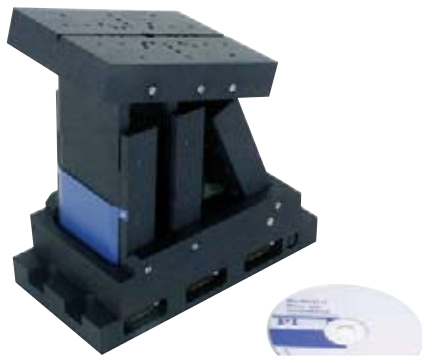


M-833 XZ-Rot Stage: Parallel Kinematic Tripod / Goniometer

Precision Positioning in X, Z, θ_y



The M-833 parallel-kinematics tripod is designed for precision positioning, offering elevation, translation and tilt motion around the (horizontal) y-axis, with a user-defined pivot point

- Goniometer Z Stage with Freely Selectable Pivot Point
- Travel Ranges ± 25 mm / ± 25 mm / $\pm 30^\circ$
- Load Capacity to 4 kg
- Min. Incremental Motion to 0.1 μm
- ActiveDrive™ Servo Motors
- Compact Design with Parallel Kinematics

| Model | Travel ranges | Max. velocity | Stiffness | Dimensions |
|----------------------------------|---|---------------|---------------------|----------------------|
| M-833.00 Tripod Goniometer-Stage | ± 25 mm (X, Z), $\pm 30^\circ$ (θ_y) (linear) | 10 mm/s | 50 N/ μm | 223,2 x 110 x 192 mm |